

COVID-19 Information

COVID-19 is a virus that spreads through close person-to-person contact. The infection transmits via coughing and sneezing (droplet transmission). It can also be spread by touching surfaces with the virus on it and then touching your mouth, nose, or eyes before washing your hands.

Symptoms of COVID-19 are like other respiratory illnesses, including the flu and common cold. Common symptoms may include one or more of the following:

- fever;
- cough;
- headaches;
- aches and pains;
- sore throat;
- chills;
- runny nose;
- loss of sense of taste or smell;
- shortness of breath or difficulty breathing.

As a respiratory illness, the best method to protect yourself against COVID-19 is to practice everyday **preventative actions**, including:



Practice proper cough and sneezing etiquette (into a tissue or the bend of your elbow);



When physical distancing is not achievable, wear a mask;



Wash your hands often with soap and water; if soap and water are not available, use an alcohol-based hand sanitizer;



Avoid touching your eyes, nose and mouth with unwashed hands;



Clean and disinfect your home regularly;



Maintain safe food practices;



Avoid close contact with people who are sick;



Avoid unnecessary travel to affected areas; and

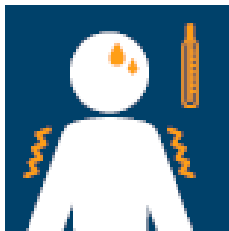


Avoid large crowds and practice physical distancing (do not shake hands, hug or kiss).

Before sending your child to school each day...

How do you feel today?

Every morning before your child leaves for school, please check to see if they are experiencing any of these symptoms:



Fever or chills



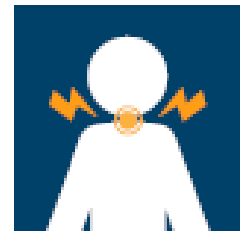
Cough



Headache



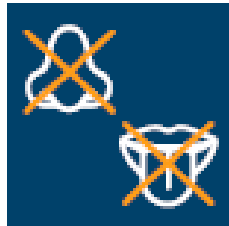
Aches and pains



Sore throat



Runny nose or congestion



Loss of taste or smell



Shortness of breath or difficulty breathing



Fatigue



Nausea or vomiting



Diarrhea



Conjunctivitis



Dizziness

If your child is experiencing any of these symptoms, do not send your child to school. Contact Healthline 811 for assistance.

PREPARING FOR AN ILL STUDENT

- Parents and caregivers should make a plan in case their child needs to be picked up early from school due to illness. Please ensure contact information is up to date with the school.

IF A STUDENT IS SICK

- If a student is experiencing cold or flu-like symptoms (fever, cough, headaches, aches and pains, sore throat, chills, runny nose, loss of taste or smell, shortness of breath or difficulty breathing), they must not attend school. Parents/caregivers should contact HealthLine 811 for direction. If the student is referred for testing, they must remain home and self-isolate until they have received their results and direction from the health authority.

IF A STUDENT BECOMES SICK AT SCHOOL

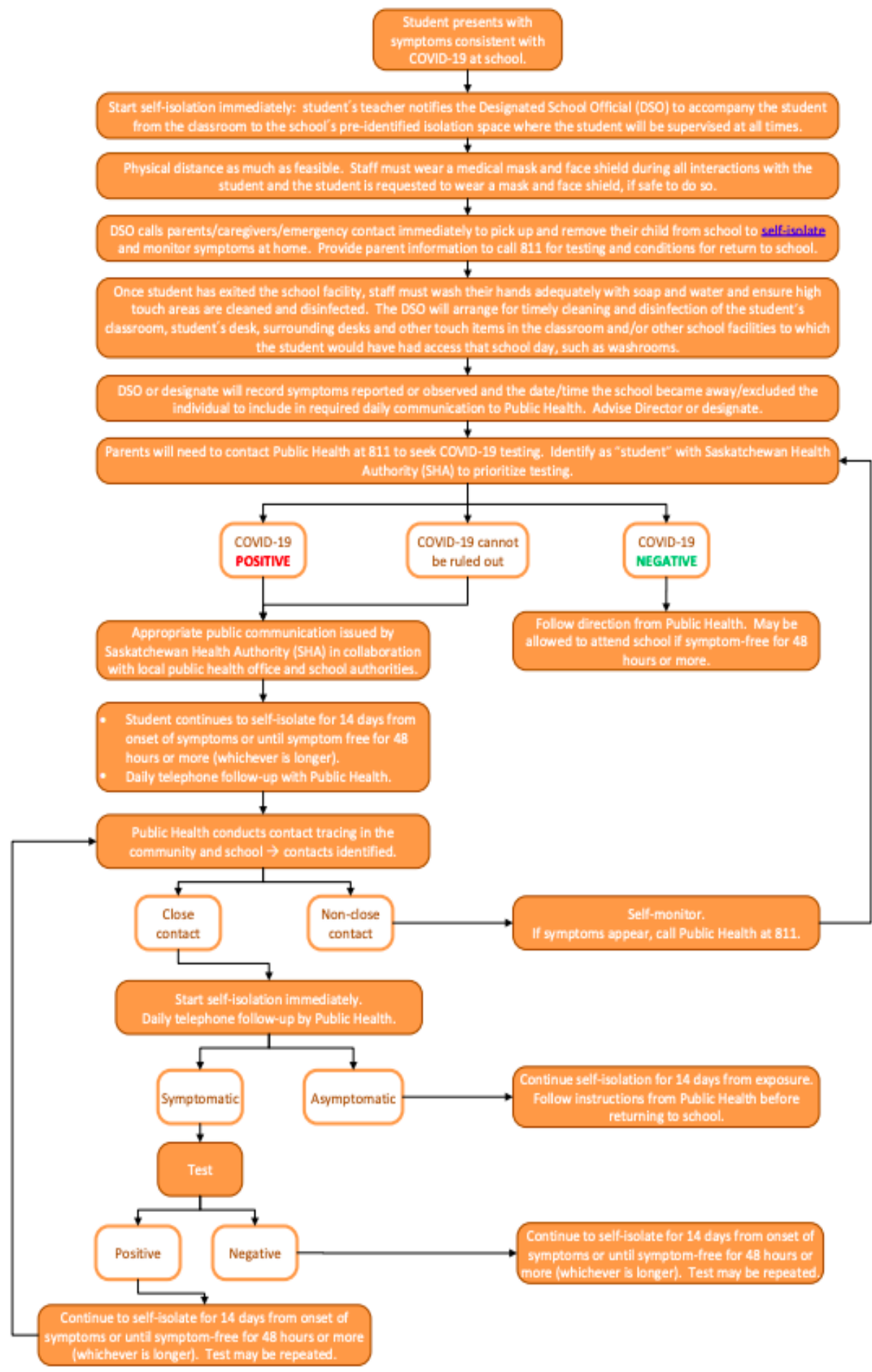
- Delisle Elementary has an isolation space for anyone with COVID-19 symptoms who is waiting to be picked up. If a student is showing symptoms, they will be isolated in this space

and provided with a medical mask until they can be picked up. Students will be supervised in this area. Supervising staff members will wear a mask and face shield during all interactions with the ill student.

- The student's parents or caregivers will be contacted and **must** pick up the student immediately. School staff will not transport the student home. After the student has been picked up, the space will be cleaned and disinfected.

- The school will also contact public health officials to provide notification of the student being removed from the school due to illness. Public health officials will then conduct an initial assessment and provide direction to the school.

- The student's classroom will be cleaned and disinfected, with particular attention to the student's desk and surrounding desks as well as any other common-touch items in the classroom and/or other school facilities the student had access to that school day, such as washrooms.





HYGIENE

- Proper hand hygiene is a key element to reducing the spread of illness. Students will be taught and expected to follow proper hand hygiene. This includes washing hands with soap and water for at least 20 seconds and the frequent use of hand sanitizer. Visual instructions for proper hand washing will be displayed beside every sink.
- Hand sanitizer will be available in all schools at all entrances and in every classroom. Students are encouraged to bring their own bottle of hand sanitizer.
- There will be numerous prompts to wash hands or use hand sanitizer throughout the day, such as when first entering the building, entering the classroom, or immediately before and after recess.

MASKS AND EYE PROTECTION

- All students are required to wear masks while riding the bus.
- Grade 4-6 students are required to wear masks at school when appropriate physical distancing cannot be maintained. Our classrooms do not allow for 2 meters of distance to be maintained between students. Therefore, students are required to wear masks during classroom learning times.
- Delisle Elementary has a combined classroom of Grade 3 & 4 students. These students will be required to wear masks in the classroom.
- Masks are recommended for Pre-Kindergarten to Grade 3 students.
- Staff are required to wear masks at all times when appropriate distancing cannot be maintained.
- When physical distancing is achievable, mask breaks may occur (i.e. outdoor learning).
- All visitors must wear masks.

- DES will provide one reusable mask for each student. Additional disposable masks will be made available by PSSD to students when needed and required.
- Students are welcome to bring their own masks.
- In some situations, wearing a mask may not be possible for a student. In these instances, school staff members will work with parents/caregivers to consider accommodations.

CLASSROOM SETUP

- Unnecessary furniture has been removed from our classrooms to provide greater space between students.
- When possible, students will be forward facing.
- Area rugs and soft furnishings that cannot be easily cleaned and disinfected have been removed.
- We are setting up the classrooms to better define students' space and help them to understand keeping to their own "personal bubble" better.

- Use of student lockers and student cubbies in classrooms will be minimized to maintain proper distancing between students. Students will hang backpacks on the backs of their chairs. Jackets will be tucked into backpacks or hung over chair backrest.

LIMITING SHARED MATERIALS

- All students will be responsible for their own school supplies.
- Learning materials that are shared amongst students during classroom lessons will be reduced and sanitized. Items that cannot be easily cleaned and disinfected will not be used.
- Students are not to bring items (i.e. toys, trinkets, knick knacks) from home.
- Computers will be cleaned between each use.
- Library books will not be signed out by students. Library and classroom books will be used at school. At this time, books will not travel between home and school.

WASHROOMS

- As much as possible, washroom use will be limited to classroom groupings (i.e. classes taking turns for washing hands before eating).
- Every effort will be made to limit the number of students in a washroom when students are from two or more different classrooms.
- Students will wear masks in the washroom when not part of their classroom group.
- Increased cleaning and sanitization will be scheduled.
- Visual instructions for proper hand washing will be displayed by every sink.

STUDENT ACCESS TO WATER

- Delisle Elementary students have access to a bottle filling stations.
- Water fountains have been temporarily disabled.

- Students are asked to bring a reusable water bottle filled from home to school every day. This water bottle is for personal use, should be labelled and must not be shared with others.

RECESS

- Students shall remain within their cohort during recess time.
- Supervising teachers will be outside at recess assigned to a cohort.
- Areas of the playground will be marked and designated for cohorts of students (i.e. a soccer field will be a space for one cohort of students while another cohort of students has the swing and playground structure area).
- Equipment that would be used by multiple students will be reduced. Other activities that do not involve the sharing of equipment will be encouraged.

ENTERING AND EXITING THE BUILDING

- Classrooms will be assigned entry and exit doors to use when entering and leaving the school.
- Classrooms will line up in their designated spot on the playground in preparation for entering the school on arrival in the morning or after recesses.
- Classrooms will enter the school via their assigned entry doors one class at a time, waiting until the boot rack area is free of students from other classrooms before entering the building.
- Classrooms will move through the hallway to leave the school building for recess when there is no other classroom in the hallways.

TRANSPORTATION

- All students and staff riding or boarding buses are required to wear a mask.
- For contact tracing purposes, students will be assigned seats on buses, and a record of the seating plan will be kept. Students who live in the same household should be seated together.
- Buses are to be cleaned and sanitized after each run.

PICK UP & DROP OFF AT SCHOOL

- Parents and caregivers are asked to transport their own children where possible.
- Students are to arrive at school **after** 8:40. The school day begins at 8:47.
- Immediately upon arrival to school, students will line up in their class's designated area on the playground where their teacher will be waiting for them and supervising the line-up before taking the class into the school. Students will not play on the

playground prior to the start of the school day.

- Parents and caregivers are asked to transport their own children where possible and consider using alternative drop off and pick up spots to reduce congestion and maintain social distancing at the front of the school building.
- Parents may want to consider walking or biking to school and choosing spots on the playground to meet their child(ren) such as the garden, the basketball hoops, the soccer fields, etc.
- Parents who are driving, may want to consider alternates to the front of the school for pick up and drop off, including 5th Ave, 4th Ave, or Main Street
- If parents or guardians must enter the school, they will be required to fill out a health questionnaire or use Prairie Spirit COVID screening app before entering the building. Paper copies will be made available outside the office. These copies must be given to Teresa Shirley, Administrative Assistant, in the office. These forms will be used if

a contact tracing investigation is necessary.

- If a parent or caregivers must enter the school building to tend to an urgent situation with their child, the parents or caregivers must put on a mask and use hand sanitizer immediately upon entering the school. Once in the school, parents and caregivers must maintain physical distance from staff and other students and should practice diligent hand hygiene by washing or using hand sanitizer.
- Bus students are dismissed at 2:55. Bus students will be taken to their busses in their class groupings by a staff member.
- Town students and those being transported by parents will be dismissed at 3:00.

VISITORS TO THE SCHOOL

- At this time, visitors are discouraged from coming into the school except in emergency situations. Visitors (including parents/guardians/caregivers) who must enter the building will

be required to fill out a health questionnaire or use Prairie Spirit COVID screening app when arriving at the school. Paper copies will be made available at the front office. These copies must be submitted to Teresa Shirley, Administrative Assistant, in the office. These forms will be used if a contact tracing investigation is necessary.

- Parents/caregivers are asked to contact the school by phone (306-493-2451) or email (des@spiritsd.ca) to make an appointment if they need to come to the school.
- Parents/caregivers who need to pick up their child(ren) at any time during the school day are asked to call the school ahead of time and to wait in the designated waiting area outside for your child to meet you there.

KINDERGARTEN

- Home visits will not be possible. Instead, Kindergarten students will begin in small groups only to allow for a gentle introduction and getting to know their teacher, the school, routines, spaces, and

classroom. More information about the small group starts will be sent by K teacher.

LUNCHTIME / SNACKS

- Students are encouraged to go home for lunch when possible.
- Supervision will be provided at lunchtime by staff members. However, supervisors will be required to maintain distance from groups of students who are not their own classroom.
- In order for supervising teachers to maintain distance from students as much as possible, students should bring items for snack and lunch that they can open unassisted. Many common lunch items cause problems for younger students to open, including juice box wrappers, screw-off tops, fruit cups, yogurt tubes, and even some reusable container lids.
- It is recommended that students keep an extra disposable fork and spoon in a Ziplock bag in their backpack. Utensils cannot be provided by school staff.

- Delisle Elementary will not be making hot lunches available (i.e. Subway, Pizza Hut, hotdogs).
- Food will not be shared among students. Classroom snacks (i.e. for birthday celebrations or other occasions) cannot be brought at this time.

Preparing for Kindergarten

Help your child to develop these skills, which will reduce the need for close contact with the teacher.

- Get dressed – zip up jacket, put on shoes, button clothes.
- Eat snacks and lunch – open containers, unscrew tops, unwrap straws.
- Put away their belongings after they're done.
- Use bathroom independently.
- Ask for help.
- Express needs and wants.
- Wait for their turn to share.