

Richard O. Burdick
 First Horn Regina Symphony
 Composer
 I Ching Music
 www.i-ching-music.com
 Phone 306-949-9412
 e-mail: rb@horn.pro



Richard O. Burdick
 Natural horn, French horn & Composer
 First Horn Regina Symphony

i-ching-music.com
 (306) 949-9412
 e-mail: rb@horn.pro

3245 Robinson Street
 Regina, S4S1V8
 Saskatchewan, Canada

Information for my horn students can be found on the web:
<http://www.i-ching-music.com/HornSTUDENTS.html>

When one ceases to struggle and begins singing into the instrument, s/he will be near the perfection that the greatest artists have spent a lifetime achieving.

1) Breath and empty your horn

2) Pitch bending for good tone

finger Bb - 0



3) loosen-up with the noodle thing



4) easy slurs



5) beter slurs



6) great slurs



7) Sing loud!

Musical notation for exercise 7, 'Sing loud!'. The exercise is written on a single treble clef staff. It consists of seven measures, each containing a sequence of eighth notes. The notes are: G4, A4, B4, C5, B4, A4, G4. The first measure starts with a forte dynamic marking (***ff***). Below the staff, fingerings are indicated: 2, 1, 3, 23, 13, 123.

8) Breath deeply but high in the lungs, float to the high tone

Musical notation for exercise 8, 'Breath deeply but high in the lungs, float to the high tone'. The exercise is written on a single treble clef staff. It consists of seven measures, each containing a sequence of eighth notes. The notes are: G4, A4, B4, C5, B4, A4, G4. The first measure starts with a mezzo-forte dynamic marking (***mf***). Below the staff, fingerings are indicated: 2, 1, 3, 23, 13, 123.

9) singing short

Musical notation for exercise 9, 'singing short'. The exercise is written on a single treble clef staff. It consists of two measures, each containing a sequence of eighth notes. The notes are: G4, A4, B4, C5, B4, A4, G4. The first measure ends with a quarter rest, and the second measure ends with a quarter rest.

10) be fluent and smooth

Musical notation for exercise 10, 'be fluent and smooth'. The exercise is written on a single treble clef staff. It consists of a single long note, G4, with a slur over it. The note is marked with a mezzo-forte dynamic (***mf***). Below the staff, fingerings are indicated: 0 2 0 1 0 3 0 23 0 0 0 2 0 1 0 3 0 23 0 T3 0 T23 0 0.

Musical notation for exercise 10, 'be fluent and smooth'. The exercise is written on a single bass clef staff. It consists of a single long note, G3, with a slur over it. Below the staff, fingerings are indicated: 0 T23 0 3 0 23 0 3 0 1 0 2 0 0 0 23 0 3 0 1 0 2 0 0.

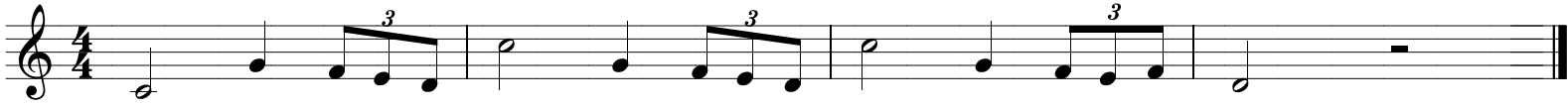
Musical notation for exercise 10, 'be fluent and smooth'. The exercise is written on a single treble clef staff. It consists of a single long note, G4, with a slur over it. Below the staff, fingerings are indicated: 0 12 0 1 0 2 0 0 0 1 0 2 0 T230 T120 T1 0 T2 0 T0 0 T230 T120 T1 0 T2 0 T0 0 T2 0 0.

all with Bb thumb valve

Musical notation for exercise 10, 'be fluent and smooth'. The exercise is written on a single treble clef staff. It consists of a single long note, G4, with a slur over it. Below the staff, fingerings are indicated: 0 230 120 1 0 2 0 0 0 2 0 0 0 2 0 3 0 130 2 0 0 0 0 2 0 1 0 3 0 2 0 0 0 2 0 0 0 2 0 1 0 120 230.

Some fun melodies

Star Wars



Darth Vaders Funeral



Jurassic Park



Back to the future



Richard Burdick's most common fingerings
for French horn

Staff 1 (Bass clef, 4/4):
Notes: G₂, F₂, E₂, D₂, C₂, B₁, A₁, G₁, F₁, E₁, D₁, C₁.
Fingerings: t2, t0, 123, 13, 23, 12, 1, 2, 0, t23, t3, 23.

Staff 2 (Bass clef, 4/4):
Notes: B₁, A₁, G₁, F₁, E₁, D₁, C₁, B₁, A₁, G₁, F₁, E₁, D₁.
Fingerings: 3, 1, 2, 0, 23, 3, 1, 2, 0, 12, 1, 2.

Staff 3 (Treble clef, 4/4):
Notes: G₂, F₂, E₂, D₂, C₂, B₂, A₂, G₂, F₂, E₂, D₂, C₂.
Fingerings: 0, 1, 2, 0, t23, t12, t1, t2, t0, t23, t12, t1.

Staff 4 (Treble clef, 4/4):
Notes: B₂, A₂, G₂, F₂, E₂, D₂, C₂, B₂, A₂, G₂, F₂, E₂, D₂.
Fingerings: t2, t0, t2, t0, t23, t3, t13, t2, t0.