

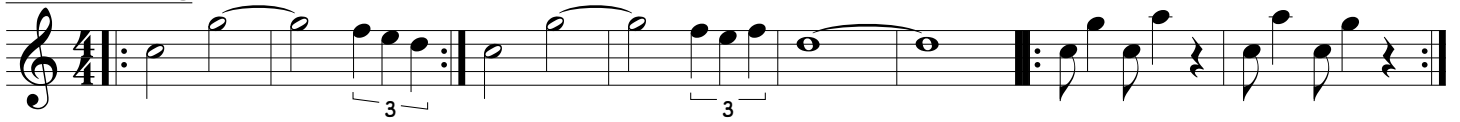
Movie & Pop Themes

Tenor Sax

Arr. By Mrs. Irej

Star Wars

Yeah (Usher)



Old Town Road (Lil Nas X)



Jurassic Park Theme

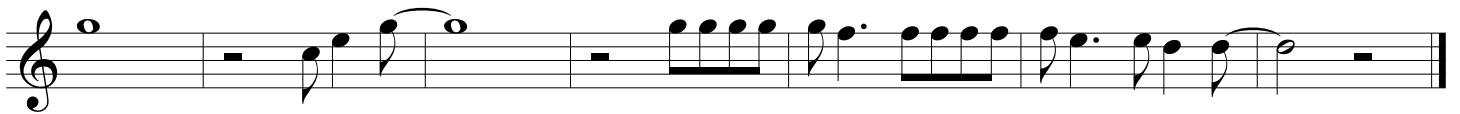
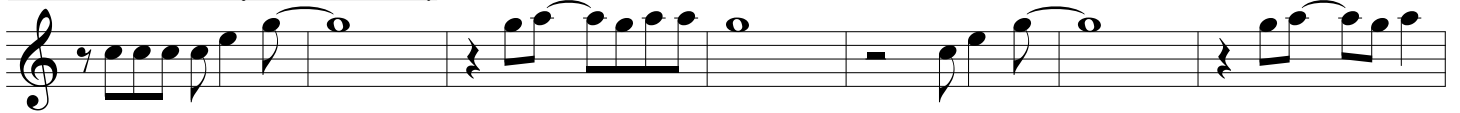


Yellow Submarine (Beatles)

Don't Stop Believin' (Journey)



I'm a Believer (from Shrek)



Havana (Camila Cabello)



Everything is Awesome (Lego Movie)



Single Ladies by Beyonce

3x



Born This Way (Lady Gaga)

Two staves of musical notation for 'Born This Way' by Lady Gaga. The first staff begins with a treble clef, a key signature of one flat (Bb), and a 7/8 time signature. It features a complex, syncopated melody with many beamed eighth and sixteenth notes. The second staff continues the melody, ending with a double bar line.

You've Got a Friend in Me (Toy Story)

Two staves of musical notation for 'You've Got a Friend in Me' from Toy Story. The first staff starts with a treble clef, a key signature of one flat (Bb), and a 4/4 time signature. The melody is simple and melodic, featuring quarter and eighth notes. The second staff continues the melody, ending with a double bar line.

Spongebob Squarepants Theme

Two staves of musical notation for the 'Spongebob Squarepants Theme'. The first staff has a treble clef, a key signature of one flat (Bb), and a 4/4 time signature. It features a melody with several triplet markings (indicated by a '3' above the notes). The second staff continues the melody, including a key signature change to one sharp (F#) and ending with a double bar line.

Truth Hurts (Lizzo)

Two staves of musical notation for 'Truth Hurts' by Lizzo. The first staff has a treble clef, a key signature of one flat (Bb), and a 4/4 time signature. It includes a triplet marking (3x) and a key signature change to one sharp (F#) in the second staff, which ends with a double bar line.

YMCA (Village People)

Two staves of musical notation for 'YMCA' by Village People. The first staff has a treble clef, a key signature of one flat (Bb), and a 4/4 time signature. It features a simple, rhythmic melody with accent markings (>) above the notes. The second staff continues the melody, ending with a double bar line.

Do You Wanna Build a Snowman (Frozen)

Three staves of musical notation for 'Do You Wanna Build a Snowman' from Frozen. The first staff has a treble clef, a key signature of one flat (Bb), and a 4/4 time signature. The melody is simple and consists of quarter and eighth notes. The second and third staves continue the melody, ending with a double bar line.

Alexander Hamilton (Hamilton)

One staff of musical notation for 'Alexander Hamilton' from the musical Hamilton. It has a treble clef, a key signature of one flat (Bb), and a 4/4 time signature. The melody is fast and rhythmic, featuring many beamed eighth and sixteenth notes, ending with a double bar line.

Senorita (Shawn Mendez)

Two staves of musical notation for the song "Senorita" by Shawn Mendes. The first staff begins with a treble clef, a key signature of one flat (B-flat), and a common time signature. The melody consists of eighth and quarter notes with various rests and ties. The second staff continues the melody, ending with a double bar line.

Sucker (Jonas Brothers)

Two staves of musical notation for the song "Sucker" by the Jonas Brothers. The first staff starts with a treble clef, a key signature of one flat, and a common time signature. The melody features eighth notes and quarter notes with ties. The second staff continues the piece, ending with a double bar line.

A Million Dreams (Greatest Showman)

Three staves of musical notation for the song "A Million Dreams" from the movie "The Greatest Showman". The first staff begins with a treble clef, a key signature of one flat, and a common time signature. The melody is composed of eighth and quarter notes with ties. The second and third staves continue the melody, ending with a double bar line.

Hakuna Matata (Lion King)

Three staves of musical notation for the song "Hakuna Matata" from "The Lion King". The first staff starts with a treble clef, a key signature of one flat, and a common time signature. It includes a triplet of eighth notes. The second and third staves continue the melody, ending with a double bar line.

Hedwig's Theme (Harry Potter)

Two staves of musical notation for "Hedwig's Theme" from the Harry Potter series. The first staff begins with a treble clef, a key signature of one sharp (F#), and a 3/4 time signature. The melody is primarily composed of quarter and eighth notes. The second staff continues the melody, ending with a double bar line.

Let It Go (Frozen)

Three staves of musical notation for 'Let It Go (Frozen)'. The first staff begins with a treble clef, a key signature of one sharp (F#), and a 4/4 time signature. The melody consists of eighth and quarter notes with various rests and ties. The second and third staves continue the melody with similar rhythmic patterns and some dynamic markings.

Despacito (Luis Fonsi)

Two staves of musical notation for 'Despacito (Luis Fonsi)'. The first staff starts with a treble clef, a key signature of one sharp (F#), and a common time signature. It features a repetitive eighth-note pattern. The second staff continues this pattern and includes a '3x' marking above a specific measure, indicating a triple repeat.

Imperial March (Star Wars)

Two staves of musical notation for 'Imperial March (Star Wars)'. The first staff uses a treble clef, a key signature of one flat (Bb), and a common time signature. The melody is characterized by a steady eighth-note rhythm. The second staff continues the piece with similar rhythmic motifs and some chromatic movement.

Pink Panther

One staff of musical notation for 'Pink Panther'. It begins with a treble clef, a key signature of one sharp (F#), and a common time signature. The melody features a mix of eighth and quarter notes, ending with a triplet of eighth notes marked with a '3' above and below the notes.

I Am Moana

Two staves of musical notation for 'I Am Moana'. The first staff uses a treble clef, a key signature of one flat (Bb), and a common time signature. It features a complex, rhythmic eighth-note pattern. The second staff continues the melody with similar rhythmic intensity and some melodic variation.

Avengers Theme

Two staves of musical notation for 'Avengers Theme'. The first staff uses a treble clef, a key signature of one flat (Bb), and a common time signature. It features a dense, rhythmic pattern of eighth notes. The second staff continues the theme with a mix of eighth and quarter notes, including some accents and dynamic markings.