

Movie & Pop Themes

Arr. By Mrs. Irej

Trombone, Euphonium

Star Wars

Yeah (Usher)

Musical notation for Star Wars and Yeah (Usher). The Star Wars section is in 4/4 time, featuring a bass clef, a key signature of two flats, and a repeat sign. It includes two triplet markings. The Yeah (Usher) section is in 4/4 time, also with a bass clef and two flats, and a repeat sign.

Old Town Road (Lil Nas X)

Musical notation for Old Town Road (Lil Nas X). It is in 4/4 time, bass clef, and two flats, with a repeat sign.

Jurassic Park Theme

Musical notation for Jurassic Park Theme. It is in 4/4 time, bass clef, and two flats, with a repeat sign.

Yellow Submarine (Beatles)

Don't Stop Believin' (Journey)

Musical notation for Yellow Submarine (Beatles) and Don't Stop Believin' (Journey). The Yellow Submarine section is in 4/4 time, bass clef, and two flats, with a repeat sign. The Don't Stop Believin' section is in 4/4 time, bass clef, and two flats, with a repeat sign.

I'm a Believer (from Shrek)

Musical notation for I'm a Believer (from Shrek). It is in 4/4 time, bass clef, and two flats, with a repeat sign.

Musical notation for I'm a Believer (from Shrek). It is in 4/4 time, bass clef, and two flats, with a repeat sign.

Havana (Camila Cabello)

Musical notation for Havana (Camila Cabello). It is in 4/4 time, bass clef, and two flats, with a repeat sign.

Musical notation for Havana (Camila Cabello). It is in 4/4 time, bass clef, and two flats, with a repeat sign.

Everything is Awesome (Lego Movie)

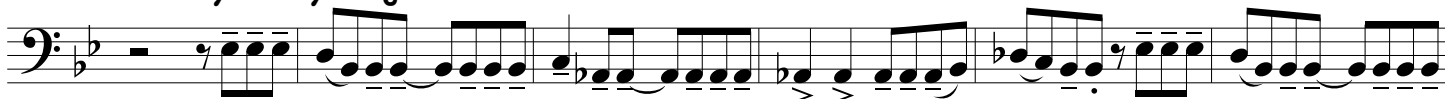
Musical notation for Everything is Awesome (Lego Movie). It is in 4/4 time, bass clef, and two flats, with a repeat sign.

Single Ladies by Beyonce

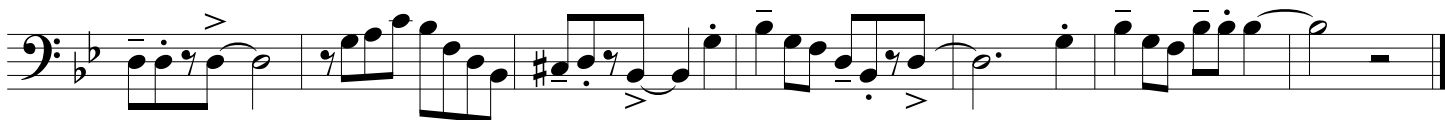
3x

Musical notation for Single Ladies by Beyonce. It is in 4/4 time, bass clef, and two flats, with a repeat sign.

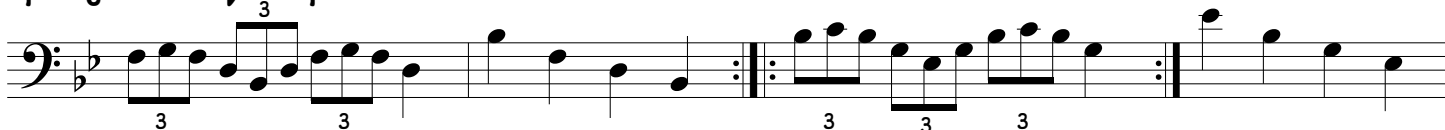
Born This Way (Lady Gaga)



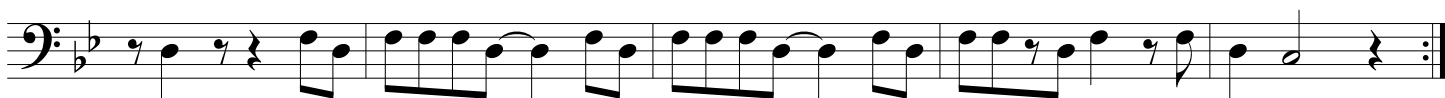
You've Got a Friend in Me (Toy Story)



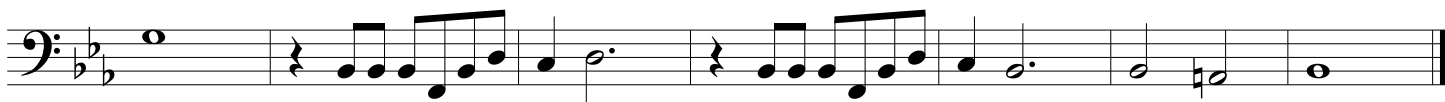
Spongebob Squarepants Theme



YMCA (Village People)



Do You Wanna Build a Snowman (Frozen)



Alexander Hamilton (Hamilton)



Senorita (Shawn Mendez)

Two staves of musical notation for the song 'Senorita' by Shawn Mendez. The first staff begins with a bass clef, a key signature of two flats (B-flat and E-flat), and a 3/4 time signature. The melody consists of eighth and quarter notes, with some rests. The second staff continues the melody with similar rhythmic patterns and includes a double bar line at the end.

Sucker (Jonas Brothers)

Two staves of musical notation for the song 'Sucker' by the Jonas Brothers. The first staff starts with a bass clef, a key signature of two flats, and a 3/4 time signature. It features a rhythmic pattern of eighth notes and quarter notes, with some rests. The second staff continues the piece, ending with a double bar line.

A Million Dreams (Greatest Showman)

Three staves of musical notation for the song 'A Million Dreams' from the movie 'The Greatest Showman'. The first staff begins with a bass clef, a key signature of two flats, and a 3/4 time signature. The melody is composed of eighth and quarter notes. The second and third staves continue the piece, with the third staff ending in a double bar line.

Hakuna Matata (Lion King)

Three staves of musical notation for the song 'Hakuna Matata' from 'The Lion King'. The first staff starts with a bass clef, a key signature of two flats, and a 3/4 time signature. It includes a triplet of eighth notes marked with a '3' above the notes. The second and third staves continue the melody, ending with a double bar line.

Hedwig's Theme (Harry Potter)

Two staves of musical notation for 'Hedwig's Theme' from the Harry Potter series. The first staff begins with a bass clef, a key signature of two flats, and a 3/4 time signature. The melody is primarily composed of quarter and eighth notes. The second staff continues the piece, ending with a double bar line.

Let It Go (Frozen)

Two staves of musical notation for 'Let It Go (Frozen)'. The first staff is in bass clef, 4/4 time, and begins with a whole rest. The melody consists of eighth and quarter notes, with some notes beamed together. The second staff continues the melody with similar rhythmic patterns and includes a fermata over a note.

Despacito (Luis Fonsi)

Two staves of musical notation for 'Despacito (Luis Fonsi)'. The first staff is in bass clef and starts with a repeat sign. It features a rhythmic pattern of eighth and sixteenth notes. The second staff continues the piece and includes a '3x' marking above a triplet of eighth notes.

Imperial March (Star Wars)

Two staves of musical notation for 'Imperial March (Star Wars)'. The first staff is in bass clef and shows the main melody with dotted rhythms. The second staff continues the melody with various rhythmic values and includes a key signature change to one sharp.

Pink Panther

Two staves of musical notation for 'Pink Panther'. The first staff is in bass clef and features a rhythmic pattern of eighth notes. The second staff continues the melody and includes two triplet markings over eighth notes.

I Am Moana

Two staves of musical notation for 'I Am Moana'. The first staff is in bass clef and features a rhythmic pattern of eighth notes. The second staff continues the melody with various rhythmic values and includes a fermata over a note.

Avengers Theme

Two staves of musical notation for 'Avengers Theme'. The first staff is in bass clef and features a rhythmic pattern of eighth notes. The second staff continues the melody with various rhythmic values and includes a fermata over a note.