

Star Wars

Musical notation for Star Wars, featuring a bass clef, key signature of two flats, and 4/4 time signature. The piece includes a triplet of eighth notes and a triplet of quarter notes.

Yeah (Usher)

Old Town Road (Lil Nas X)

Musical notation for Old Town Road, featuring a bass clef, key signature of two flats, and 4/4 time signature.

Jurassic Park Theme

Musical notation for Jurassic Park Theme, featuring a bass clef, key signature of two flats, and 4/4 time signature.

Yellow Submarine (Beatles)

Musical notation for Yellow Submarine, featuring a bass clef, key signature of two flats, and 4/4 time signature.

Don't Stop Believin' (Journey)

I'm a Believer (from Shrek)

Musical notation for I'm a Believer (from Shrek), featuring a bass clef, key signature of two flats, and 4/4 time signature.

Musical notation for I'm a Believer (from Shrek), featuring a bass clef, key signature of two flats, and 4/4 time signature.

Havana (Camila Cabello)

Musical notation for Havana (Camila Cabello), featuring a bass clef, key signature of two flats, and 4/4 time signature.

Musical notation for Havana (Camila Cabello), featuring a bass clef, key signature of two flats, and 4/4 time signature.

Everything is Awesome (Lego Movie)

Musical notation for Everything is Awesome (Lego Movie), featuring a bass clef, key signature of two flats, and 4/4 time signature.

3x

Single Ladies by Beyonce

Musical notation for Single Ladies by Beyonce, featuring a bass clef, key signature of two flats, and 4/4 time signature.

Born This Way (Lady Gaga)

Two staves of musical notation in bass clef, B-flat major, 4/4 time. The first staff contains the first four measures, and the second staff contains the next four measures. The melody is characterized by eighth-note patterns and rests.

You've Got a Friend in Me (Toy Story)

Two staves of musical notation in bass clef, B-flat major, 4/4 time. The first staff contains the first four measures, and the second staff contains the next four measures. The melody is a simple, rhythmic eighth-note pattern.

Spongebob Squarepants Theme

Two staves of musical notation in bass clef, B-flat major, 4/4 time. The first staff contains the first four measures, and the second staff contains the next four measures. The melody features triplets and a repeat sign. The word "3x" is written below the first staff.

Truth Hurts (Lizzo)

Two staves of musical notation in bass clef, B-flat major, 4/4 time. The first staff contains the first four measures, and the second staff contains the next four measures. The melody features a triplet and a repeat sign. The word "7x" is written below the second staff.

YMCA (Village People)

Two staves of musical notation in bass clef, B-flat major, 4/4 time. The first staff contains the first four measures, and the second staff contains the next four measures. The melody is a simple, rhythmic eighth-note pattern.

Do You Wanna Build a Snowman (Frozen)

Three staves of musical notation in bass clef, B-flat major, 4/4 time. The first staff contains the first four measures, the second staff contains the next four measures, and the third staff contains the final four measures. The melody is a simple, rhythmic eighth-note pattern.

Alexander Hamilton (Hamilton)

One staff of musical notation in bass clef, B-flat major, 4/4 time. The staff contains the first four measures of the melody, which is a simple, rhythmic eighth-note pattern.

Senorita (Shawn Mendez)



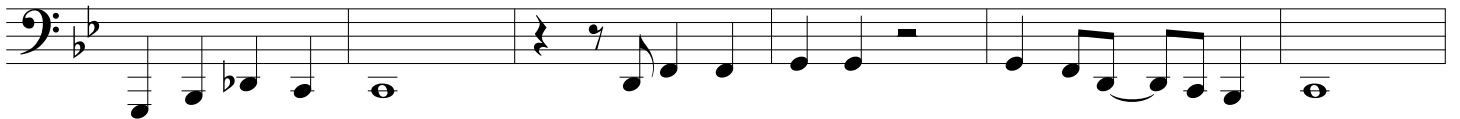
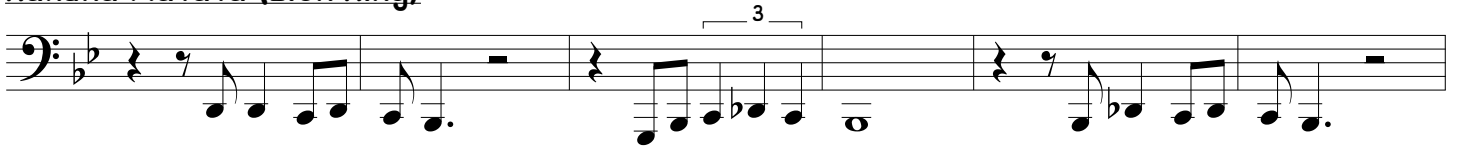
Sucker (Jonas Brothers)



A Million Dreams (Greatest Showman)



Hakuna Matata (Lion King)



Hedwig's Theme (Harry Potter)



Let It Go (Frozen)

Three staves of musical notation for 'Let It Go (Frozen)'. The first staff is in bass clef, 4/4 time, with a key signature of one flat. It begins with a whole rest followed by a series of eighth and quarter notes. The second and third staves continue the melody with various note values and rests.

Despacito (Luis Fonsi)

Two staves of musical notation for 'Despacito (Luis Fonsi)'. The first staff starts with a repeat sign and contains a sequence of eighth notes. A '3x' marking is placed below the staff. The second staff continues the melody with eighth notes and rests.

Imperial March (Star Wars)

Two staves of musical notation for 'Imperial March (Star Wars)'. The first staff is in bass clef, 2/4 time, with a key signature of two flats. It features a steady eighth-note rhythm. The second staff continues the melody with eighth notes and rests.

Pink Panther

One staff of musical notation for 'Pink Panther'. It is in bass clef, 4/4 time, with a key signature of one flat. The melody consists of eighth notes, with two triplet markings (indicated by '3') over the final measures.

I Am Moana

Two staves of musical notation for 'I Am Moana'. The first staff is in bass clef, 4/4 time, with a key signature of two flats. It features a rhythmic pattern of eighth notes. The second staff continues the melody with eighth notes and rests.

Avengers Theme

Two staves of musical notation for 'Avengers Theme'. The first staff is in bass clef, 4/4 time, with a key signature of one flat. It features a complex rhythmic pattern with many beamed eighth notes. The second staff continues the melody with eighth notes and rests, including accent markings (>) and a breath mark (b).