

# Prairie View

## Newsletter

04.29.22.edition8.pg1

### APRIL

#### Notes from Admin

We are excited to come back from Easter break to nicer weather. The playground has dried out and the students are enjoying the fields.

Thank you for sending in your criminal record checks, we are looking forward to going on field trips this year!

We are looking forward to seeing you at Family Bingo on Tuesday, May 3 and on Thursday, May 26 at the Family Appreciation BBQ.

PVS Admin

#### Marafun

Marafun training is in full swing. We are halfway to the marathon completion. The 67 students have been running 2 kms every Wednesday morning as well as making up 2 kms each week on their own time. The students have worked up to 5 circuits of running 5 minutes and walking 1 minute. We are VERY proud of the students.

#### Family Bingo

**We will be having our first family event in a long time! Thank you to the SCC for organizing Family Bingo. This will be taking place on Tuesday, May 3. Please refer to the email sent out to get your tickets. We will have limited seating and you will need to have booked a spot to attend.**

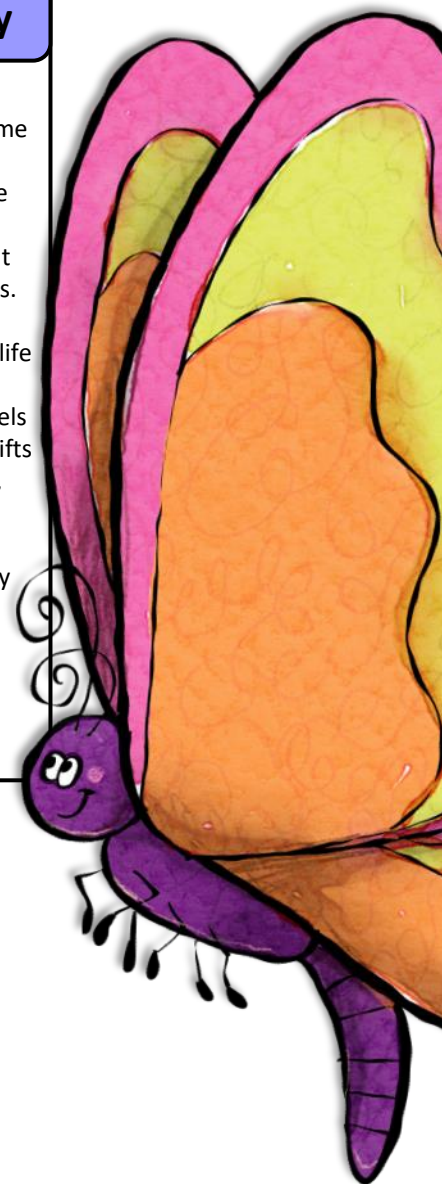
**Looking forward to seeing you there!**

#### Mother's Day and Father's Day

Thank you for being a vital part of our school community. We know that when your children come to school, you want them to learn, to feel safe, to develop friendships, and to practice compassionate and empathy towards all. As a staff, we want to model that compassion and empathy are important when we plan events and activities for our students. There are circumstances in life such that there are parents who aren't or cannot be a part of a child's life and we recognize that this can be very hurtful for little hearts. We know that children have role models who are very special to them. Instead of creating gifts for parents around Mother's Day and Father's Day, we will be providing opportunities for children to create cards for those important role models. The students are welcome to make as many as they want to distribute. These cards will be sent home during the week of May 24-27. We will be having our family appreciation BBQ on Thursday, May 26, so it coincides nicely. Thank you for your understanding.

#### Upcoming Events

**Family Bingo – May 3**  
**SCC Elections – May 5**  
**No school – May 13**  
**No school – May 23**  
**Family Appreciation BBQ – May 26**  
**Bring your stuffy to school – May 27**



# Prairie View

## Newsletter

04.29.22.edition8.pg2

### APRIL

#### Classroom Placements

A lot of time and energy goes into creating classroom lists for each school year. Our goal as a school is to place students in a setting that is appropriate for each child individually and for the group as a whole. Class placements are a group decision made by the classroom teachers, special education resource teachers, and administrators.

Parent input regarding placement may be made in writing to the principal/vice-principal **before May 13**. This letter should contain information regarding the child's learning style and needs for their learning environment. **We do not accept requests for a particular teacher. We cannot guarantee that we will be able to accommodate parents' wishes.** The final placement of a child is a school-based decision that is made using the following criteria:

- Academic needs (including program and learning environment)
- Social needs (supportive peer relationships)
- Special needs
- Level of independence
- Balance of males and females
- Academic diversity of the group

It is an extremely time-consuming process to put together class lists, and any changes to the final list usually results in several more changes. Due to these complexities and those listed above, decisions are considered complete once June progress reports are handed out.

SRC

**THANK YOU**

The SRC would like to thank you for supporting our candy bag fundraiser for the Ukraine. It was a sweet success, and we were incredibly pleased to donate

**\$524.00**  
to the Red Cross!



If everyone is moving forward together, then success takes care of itself. – Henry Ford



# Prairie View

## Newsletter

04.29.22.edition8.pg3

### APRIL

#### Grade 1/2F Class Highlight

Earth Day is an annual event celebrated on April 22. It is a day to appreciate our Earth and come up with solutions to current environmental problems. People often observe Earth Day by planting trees, picking up roadside trash, conducting various programs for recycling and conservation, and using recyclable containers for snacks and lunches. This year in 1/2F, we have talked a lot about how each of us can make a difference in the world. In our journals one student wrote, "big, small, young or old, brave or scared, we can all save the Earth!" To show our support for Earth Day, our classroom will be going out and cleaning up the garbage from the playground once the weather is nicer. We also made bird seed ornaments that we took over to Spruce Manor to hang in the trees. Not only did we get to see and wave at the residents, but we got to help wildlife by feeding the birds.



If everyone is moving forward together, then success takes care of itself. – Henry Ford

# Prairie View

## Newsletter

04.29.22.edition8.pg4

### APRIL

#### School Community Council

PRAIRIE VIEW SCHOOL  
**SCHOOL  
COMMUNITY  
COUNCIL**



#### School Community Council Update

Thank you to everyone who helped us support the school Book Fair in April. It is always great to see families as well as community members volunteer.

We are excited to host a family event again, Family Night Bingo on May 3! This event was our last hosted in February 2020 and was our last event since the pandemic arrived. The response last time was outstanding but to manage our attendance we will be hosting 2 games and ask families to RSVP for one of the time slots. The school has sent out an email with links to RSVP.

On May 5, we will hold our next meeting at 6:30 P.M. At that meeting elections for the 2022-23 Council will also be held. We have 5 openings on the Council, each for a 2-year term. We hope you will consider joining the Council by contacting the school for a nomination form. Nomination forms need to be returned to Lesa Heath prior to our meeting. If you wish to attend or add something to the agenda of our next meeting, please contact a member of the SCC.

Stay tuned for a survey from our SCC to gather information about our families as well as our Annual General Meeting, currently scheduled for May 26.

Scott Burant, SCC Chair

SCC Members include Melissa Buhler, Scott Burant, Kerri Gates, David Maier, Tara Mayor, Damaris Rempel, and Carlena Scriven. PVS Representatives include Lesa Heath, Lee Coates, and Rona Roth.



**We're on Facebook!**

PRAIRIE VIEW SCHOOL COMMUNITY COUNCIL PRESENTS

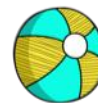
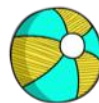


Tuesday, May 3, 2022  
4:30 & 6:30

SIBLINGS & GRANDPARENTS WELCOME!

NO COST TO PLAY.  
CONCESSION AVAILABLE FOR SNACKS,  
DRINKS, & BINGO DABBERS!!

Limited space available...  
Reserve your spot on eventbrite!



Intelligence plus character – that is the true goal of education. - Martin Luther King, Jr.